



THE SCIENCE OF READYSM

INTERCONTINENTAL TERMINALS CONTINENTAL TANK FIRE

Deer Park, TX

March 18, 2019

Project #111356

1.0 Introduction

On March 17, 2019 Intercontinental Terminals Company (ITC) requested that CTEH® conduct air monitoring in the surrounding community after a tank fire at the Deer Park, TX terminal. CTEH® arrived on-site on March 17, 2019 and began air monitoring operations. Activities were comprised of real-time air monitoring.

This report summarizes air monitoring data collected from March 17, 2019 17:02 CDT to March 18, 2019 7:42 CDT.

2.0 Air Monitoring and Sampling Methods

CTEH® developed and implemented an air sampling and analysis work plan (SAP) to document and quantify the release of fugitive emissions from the fire. All instrumentation was calibrated at least once per day or per manufacturer's recommendations. Target analytes were measured as benzene, percent of the lower explosive limit (%LEL), Naphtha, 2.5-Micron particulate matter (PM_{2.5}), toluene, volatile organic compounds (VOCs), and Xylene using handheld instruments such as RAE Systems MultiRAEs, TSI SidePak™ AM510 Aerosol Monitors and Gastec GV-100 pumps with chemical-specific colorimetric detection tubes.

Hand-held air monitoring consisted of roaming air monitoring in the surrounding community. All hand-held air monitoring was conducted in the breathing zone.

3.0 Air Monitoring Results

Attachment A depicts the site location and hand-held monitoring locations for this reporting period.

Table 1 summarizes the results for community hand-held air monitoring readings.

Table 1: Community Hand-Held Real-Time Air Monitoring Results

| Analyte | Instrument | Num Readings | Num Detections | Range ¹ |
|------------------|--------------|--------------|----------------|--------------------|
| Benzene | Gastec #121L | 6 | 0 | < 0.05 ppm |
| | UltraRAE | 64 | 0 | < 0.5 ppm |
| Formaldehyde | Gastec #91L | 1 | 0 | < 0.05 ppm |
| Hexane | Gastec #102L | 2 | 0 | < 1 ppm |
| Hydrogen Sulfide | Gastec #4LL | 3 | 0 | < 0.1 ppm |
| | MultiRAE | 53 | 0 | < 0.1 ppm |
| LEL | MultiRAE | 109 | 0 | < 1 % |
| Naphtha | Gastec #106 | 21 | 0 | < 0.1 mg/L |
| Naphthalene | Gastec #60 | 14 | 0 | < 0.1 ppm |

| Analyte | Instrument | Num Readings | Num Detections | Range ¹ |
|------------------|--------------|--------------|----------------|---------------------|
| Nitrogen Dioxide | Gastec #9L | 6 | 0 | < 0.1 ppm |
| | MultiRAE | 32 | 0 | < 0.1 ppm |
| Oxygen | MultiRAE | 25 | 25 | 20.9 - 20.9 % |
| PM2.5 | AM510 | 44 | 44 | 0.007 - 0.043 mg/m3 |
| Sulfur Dioxide | MultiRAE | 21 | 0 | < 0.1 ppm |
| Toluene | Gastec #122L | 12 | 0 | < 0.5 ppm |
| VOCs | MultiRAE | 137 | 1 | 0.1 ppm |
| Xylene | Gastec #123L | 24 | 0 | < 1 ppm |

¹Maximum detections preceded by the "<" symbol are considered non-detections below the limit of detection (LoD) value to the right.

No detections during this reporting period exceeded the action levels as outline in the CTEH® SAP. One detection of VOCs was recorded approximately 5.5 miles WSW from the fire.

4.0 Weather Conditions

Attachment B contains a wind rose depicting wind speed and direction for this reporting period. Data was acquired from the Texas Commission on Environmental Quality (TCEQ) Lynchburg Ferry meteorological station located on Tidal Road approximately 2 mi NNE of the fire.

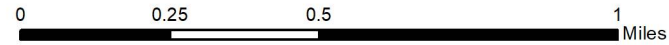
Attachment A

CTEH Monitoring Locations

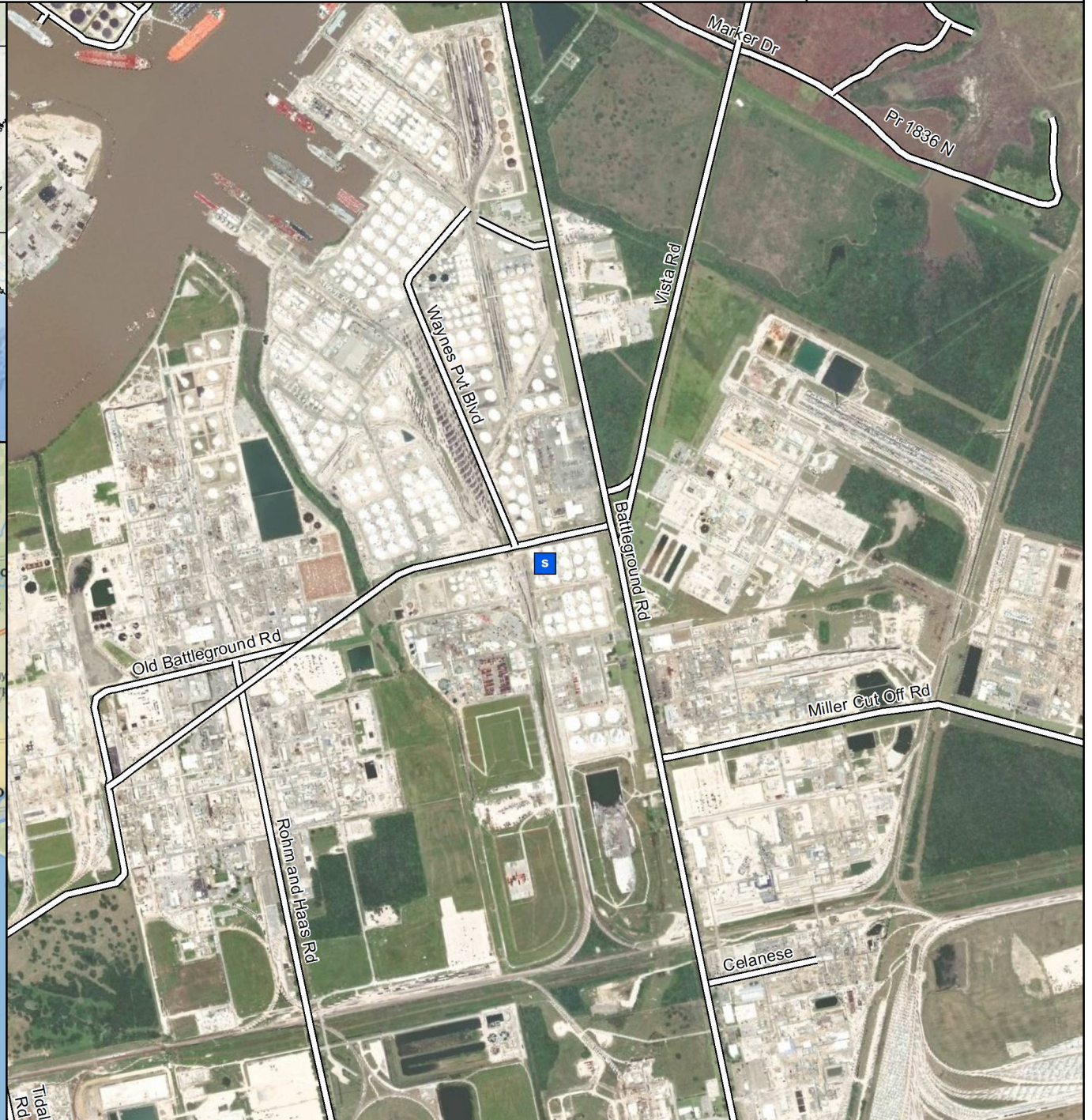
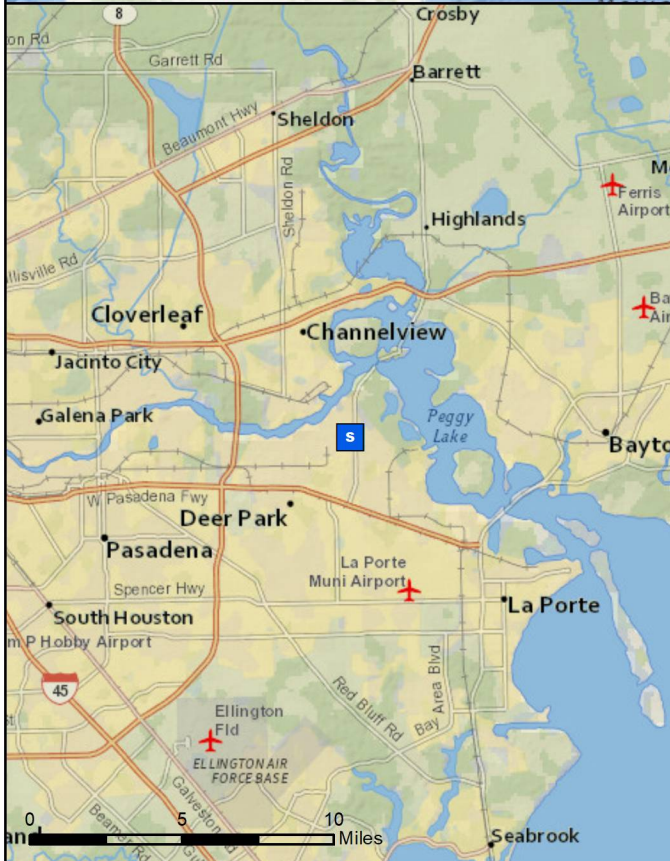
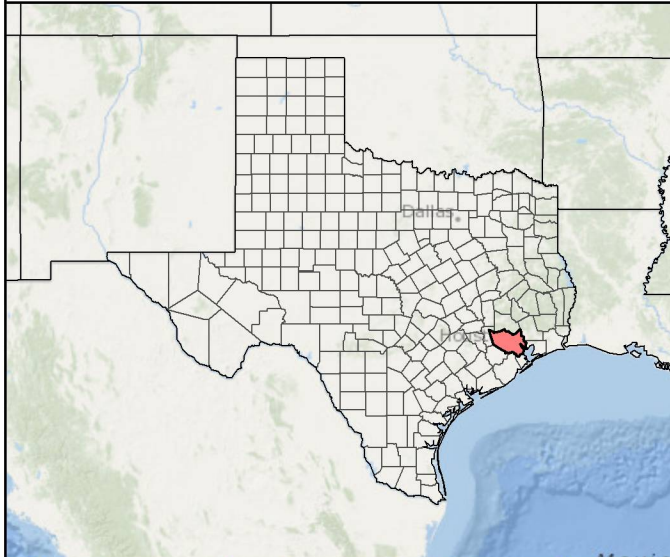


Incident Location

ITC Tank Fire



Project: 111356
Client: ITC
City: Deerpark, TX
County: Harris





Hand-Held Real-Time Monitoring Locations

ITC Tank Fire Deerpark, TX

0 2.5 5 Miles

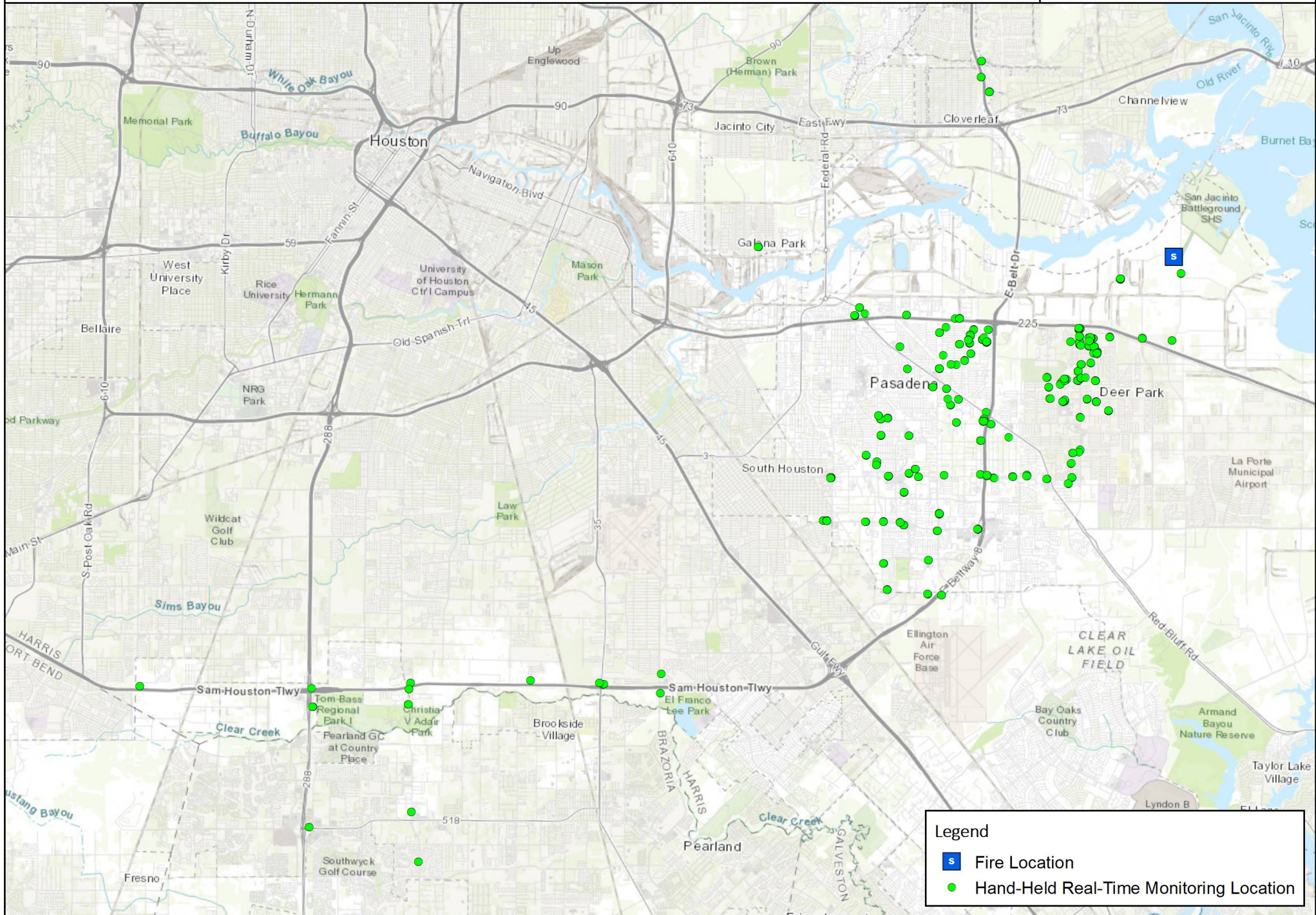


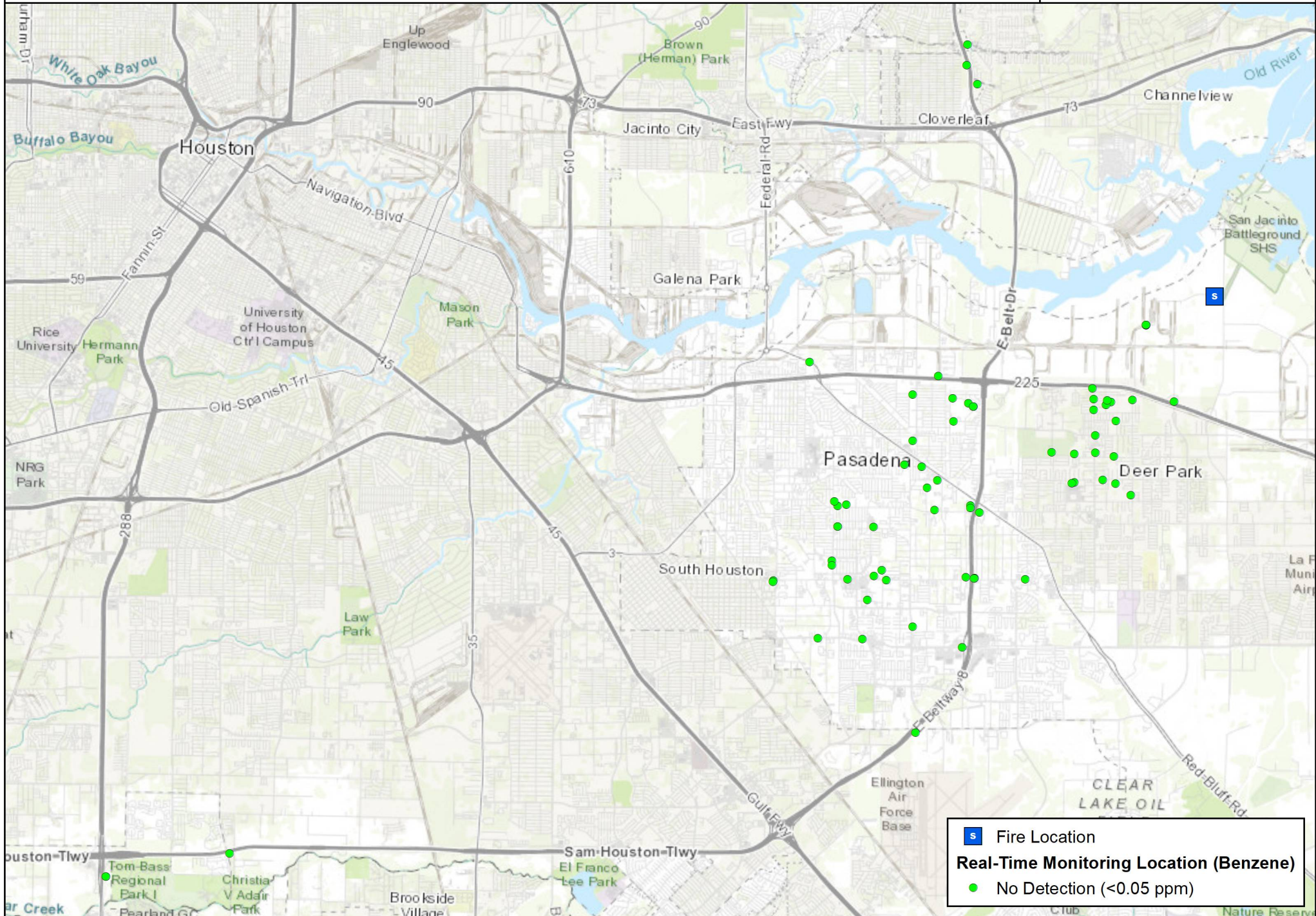
Project:111356

Client: ITC

City: Deerpark, TX

County: Harris



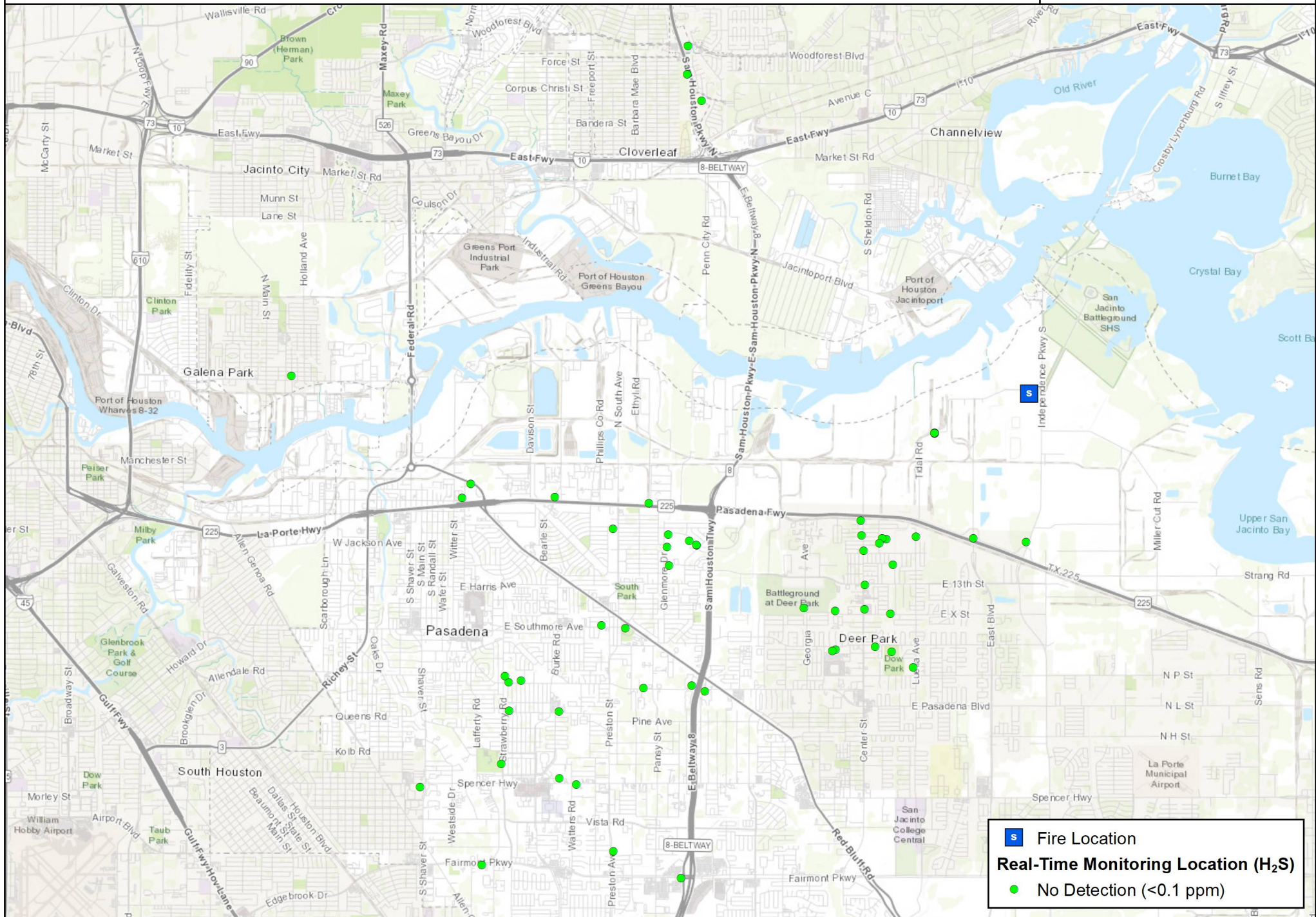


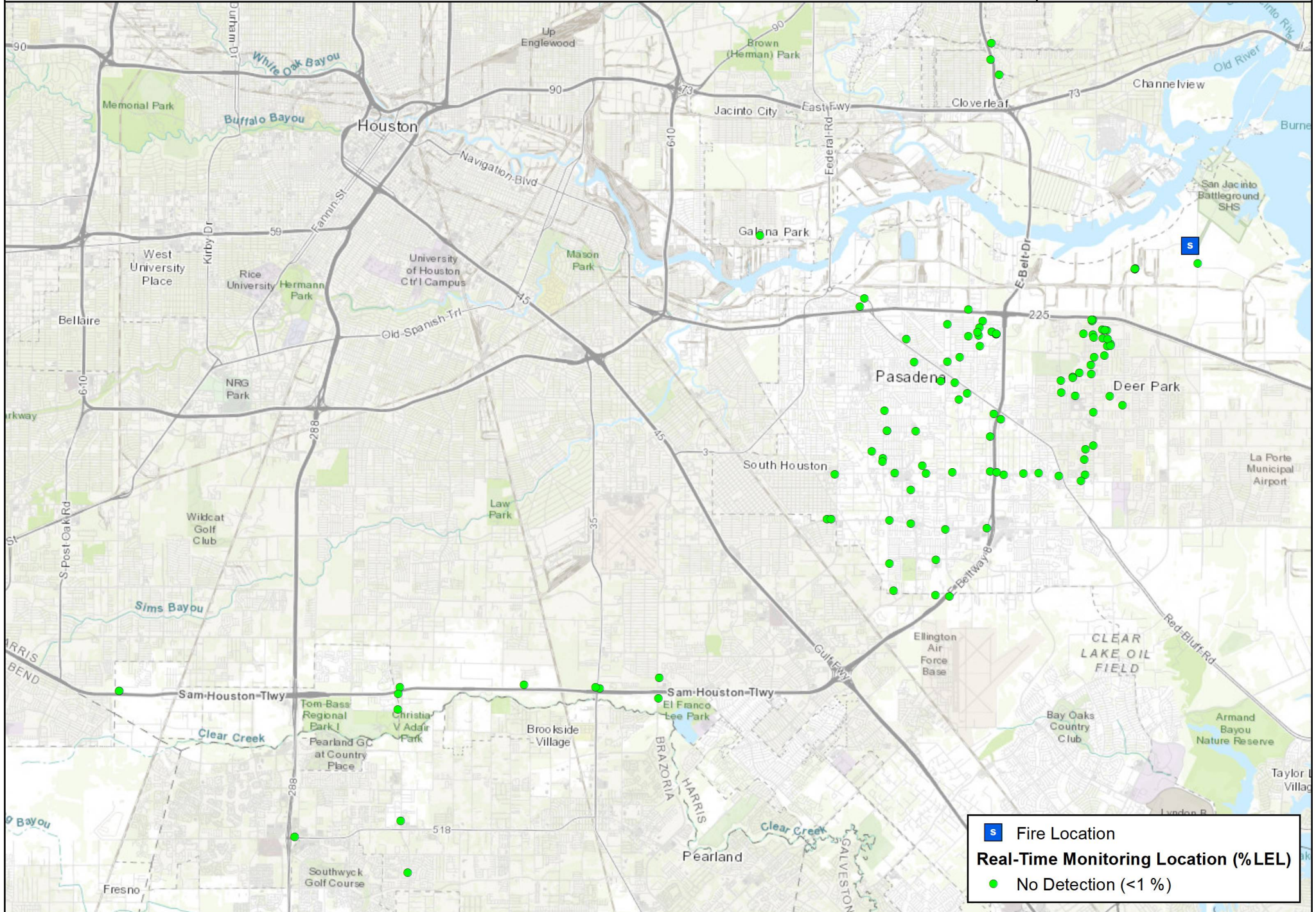
S

Fire Location

Real-Time Monitoring Location (Benzene)

No Detection (<0.05 ppm)







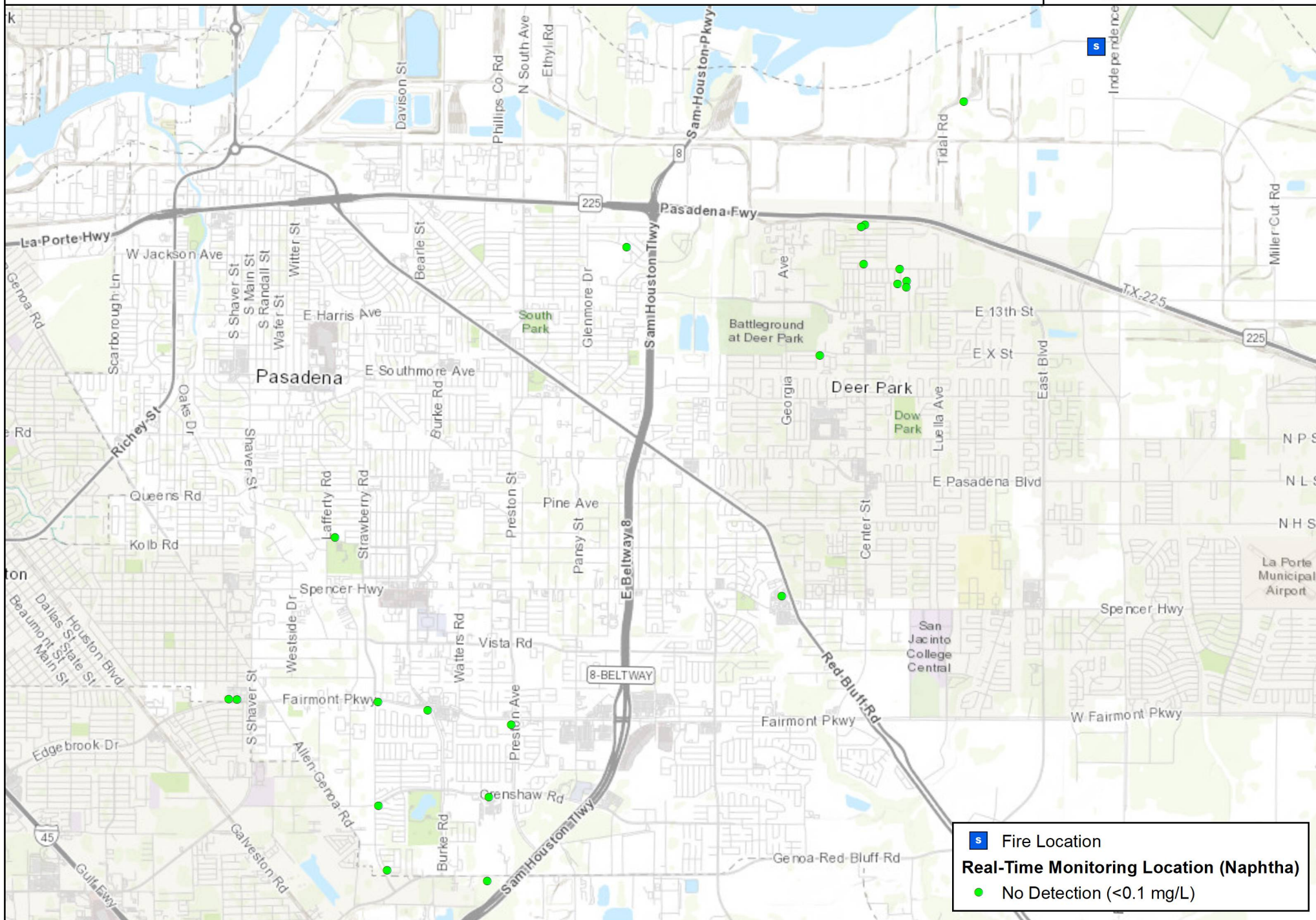
Hand-Held Real-Time Monitoring Locations (Naphtha)

ITC Tank Fire Deerpark, TX

0 1 2 Miles



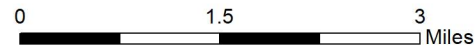
Project:111356
Client: ITC
City: Deerpark, TX
County: Harris



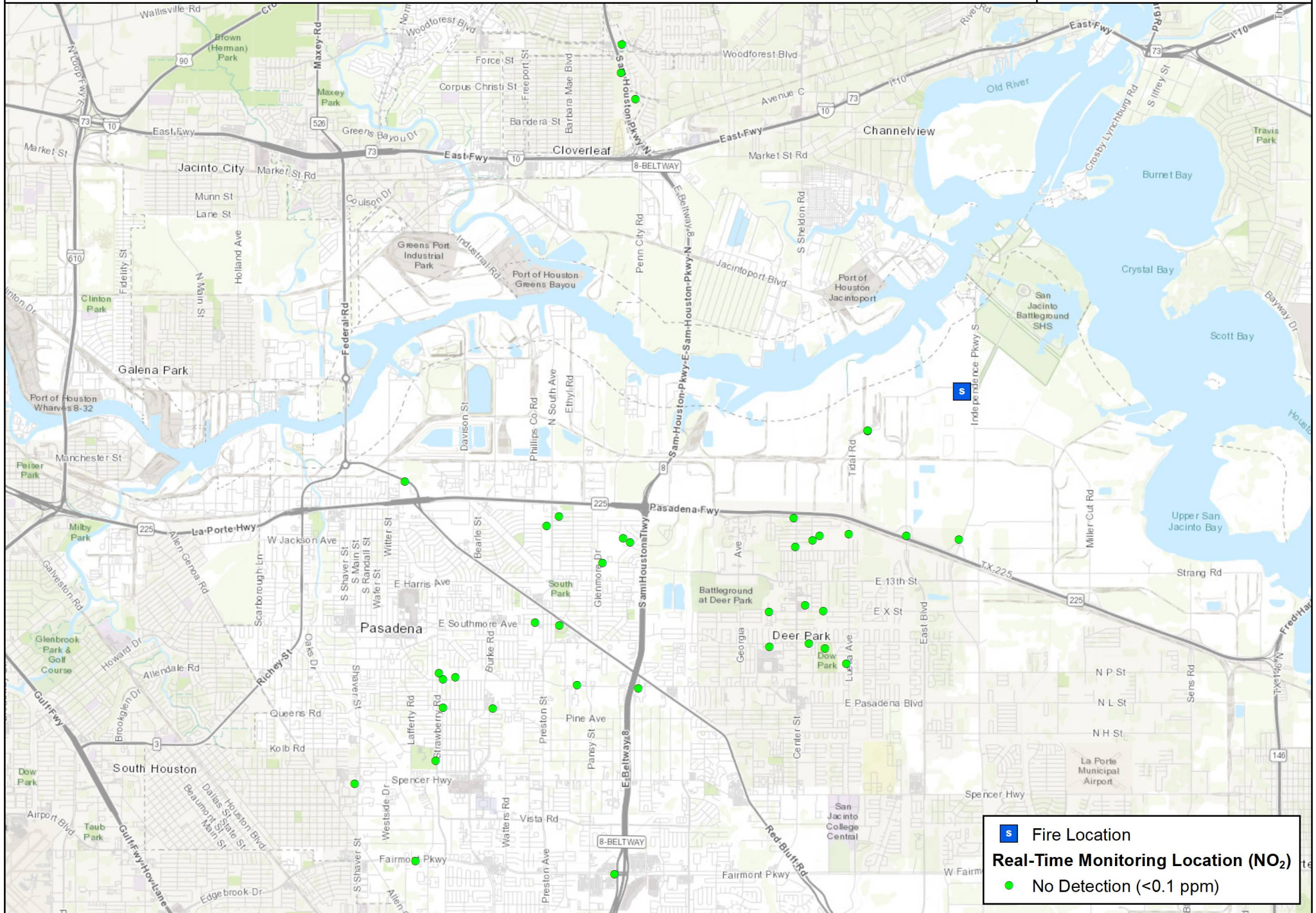


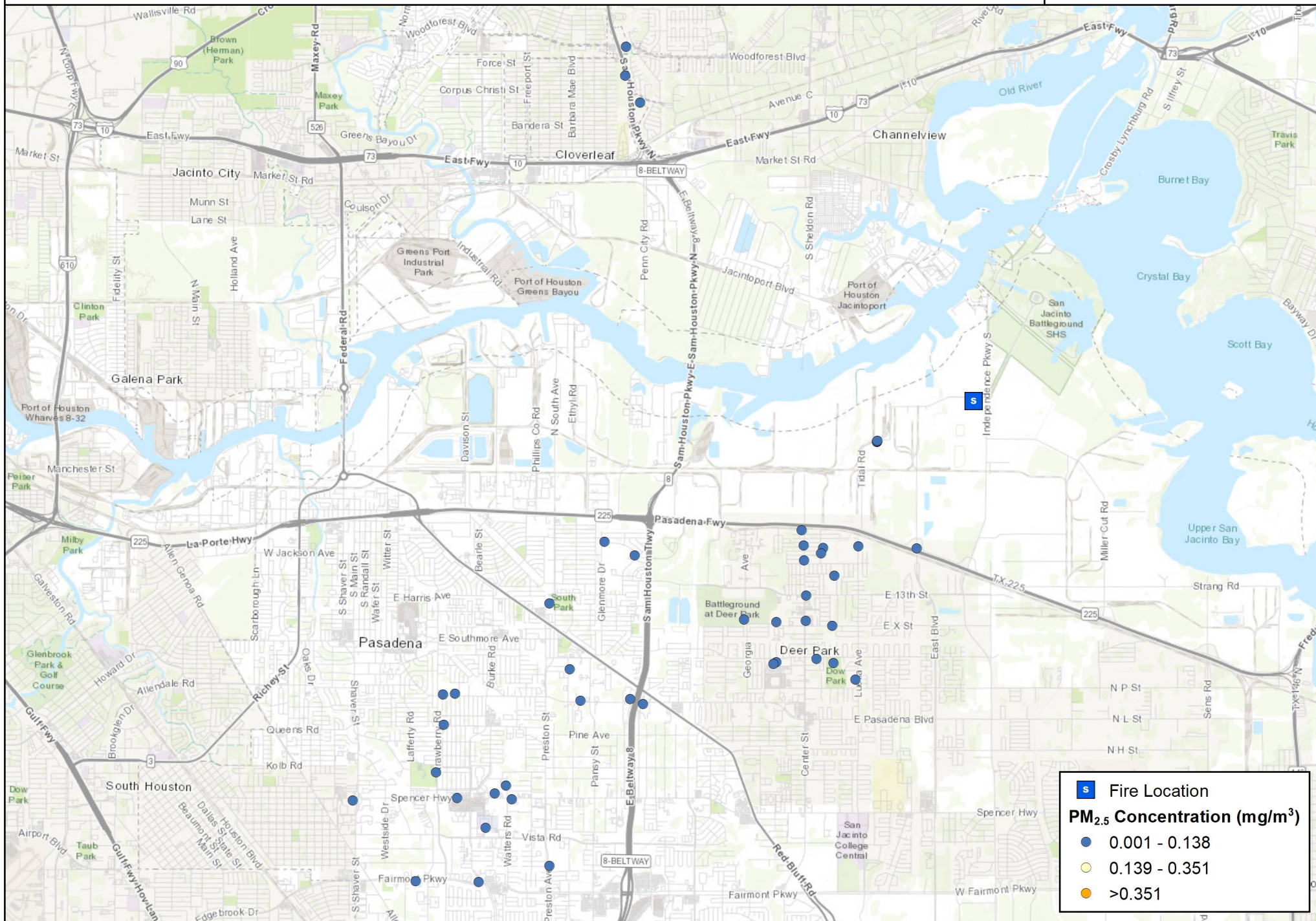
Hand-Held Real-Time Monitoring Locations (NO₂)

ITC Tank Fire Deerpark, TX



Project: 111356
Client: ITC
City: Deerpark, TX
County: Harris







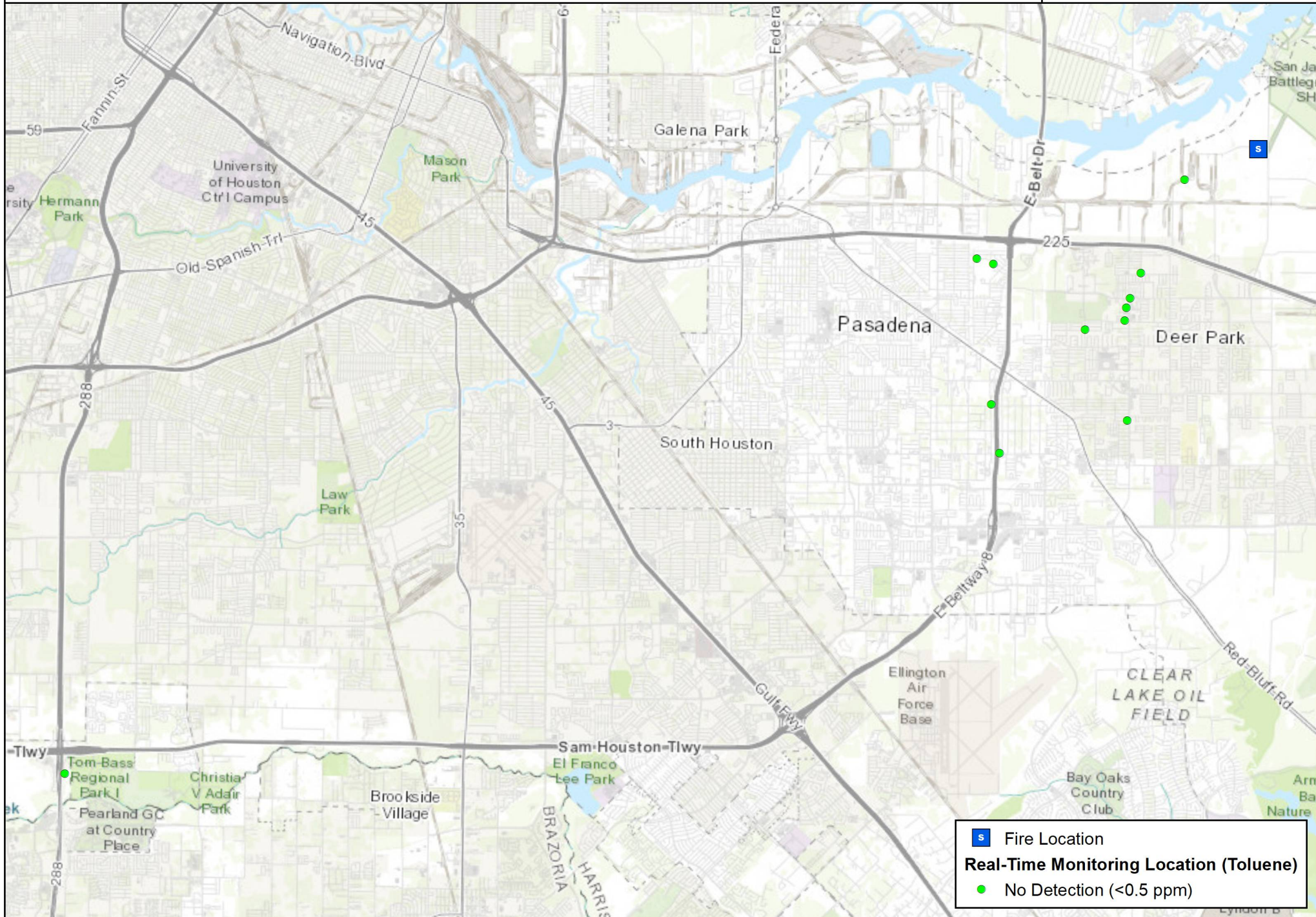
Hand-Held Real-Time Monitoring Locations (Toluene)

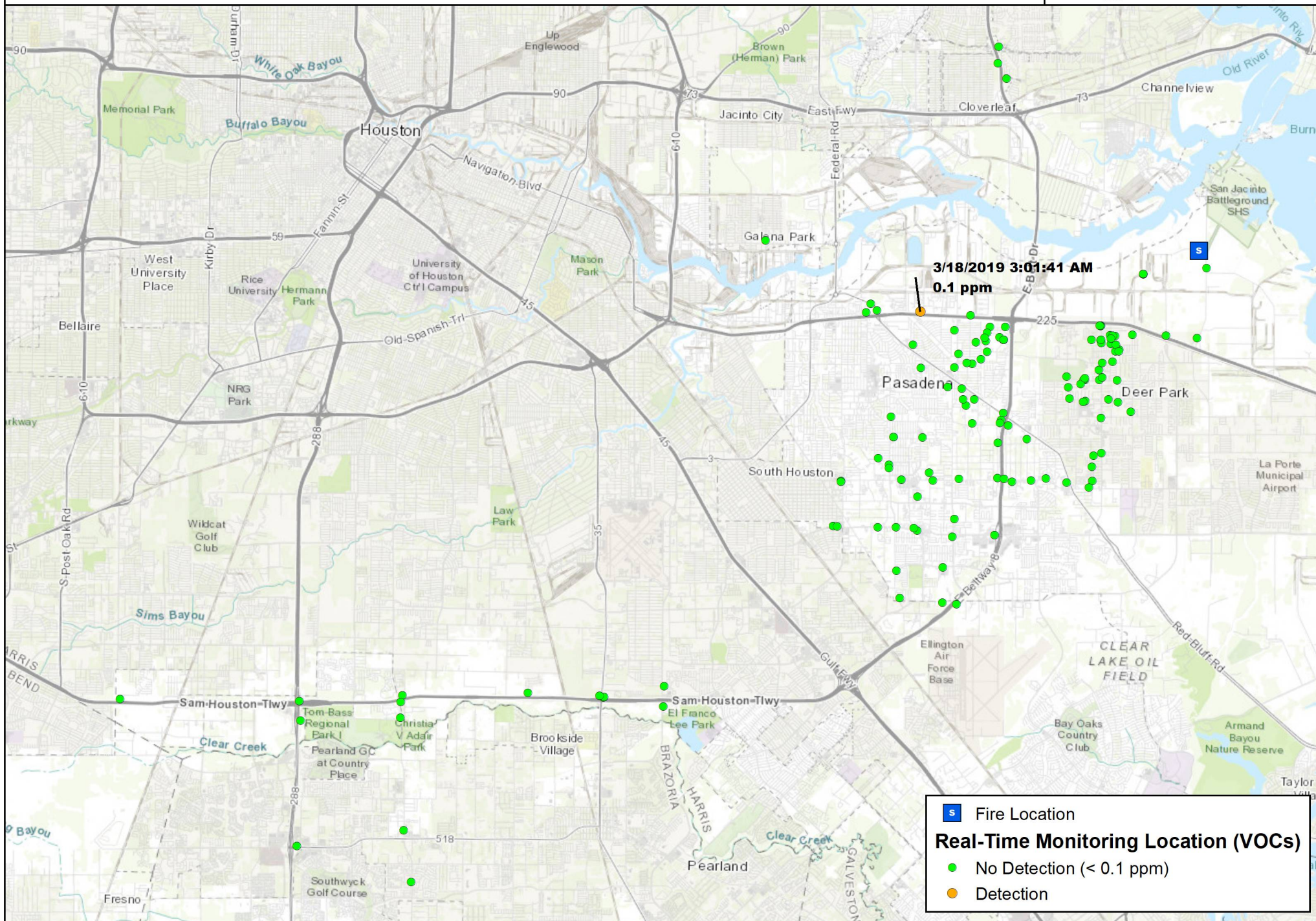
ITC Tank Fire Deerpark, TX

0 1.5 3 Miles



Project:111356
Client: ITC
City: Deerpark, TX
County: Harris







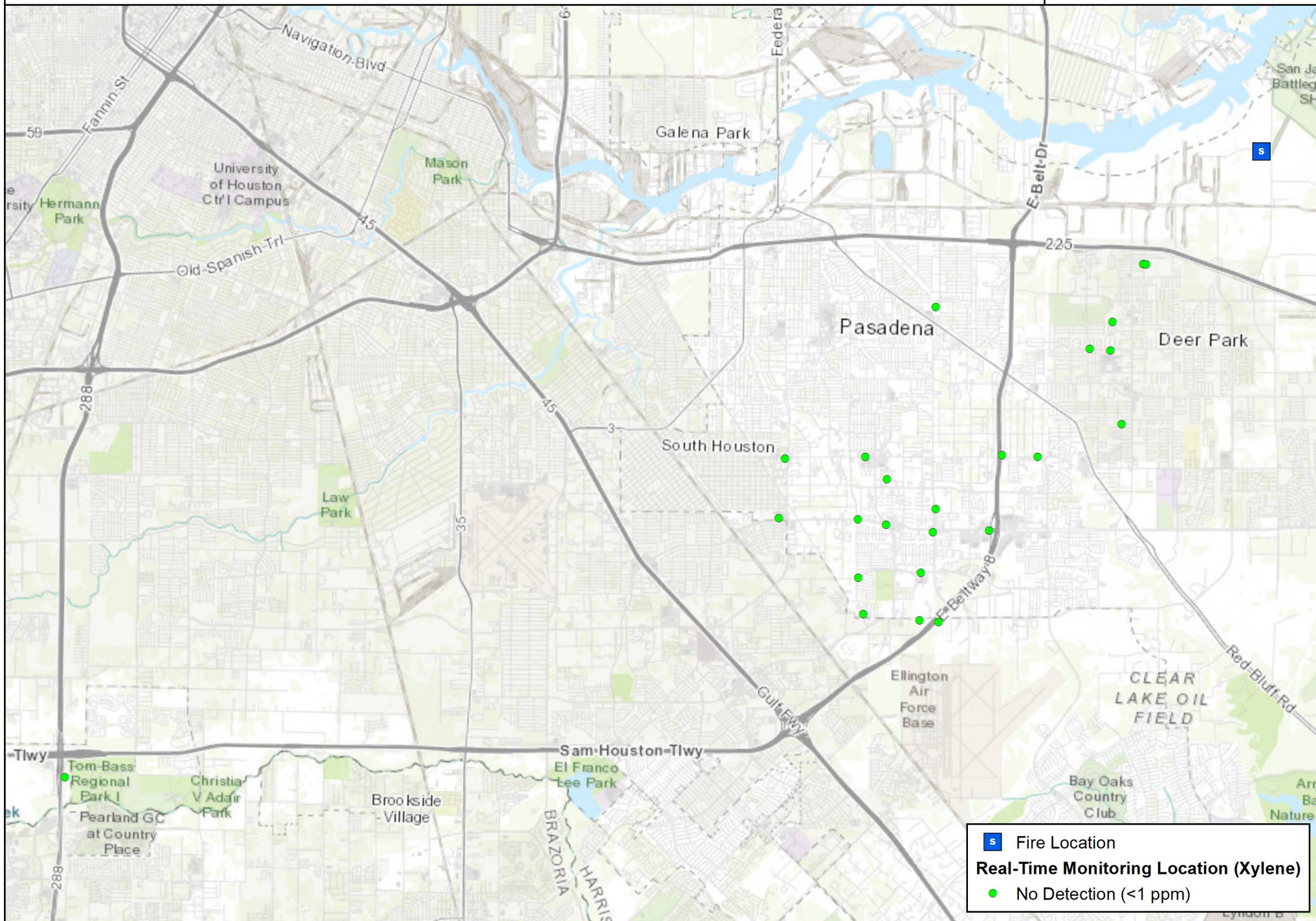
Hand-Held Real-Time Monitoring Locations (Xylene)



ITC Tank Fire Deerpark, TX

0 1 2 Miles



Project:111356
Client: ITC
City: Deerpark, TX
County: Harris



-  Fire Location
- Real-Time Monitoring Location (Xylene)**
-  No Detection (<1 ppm)

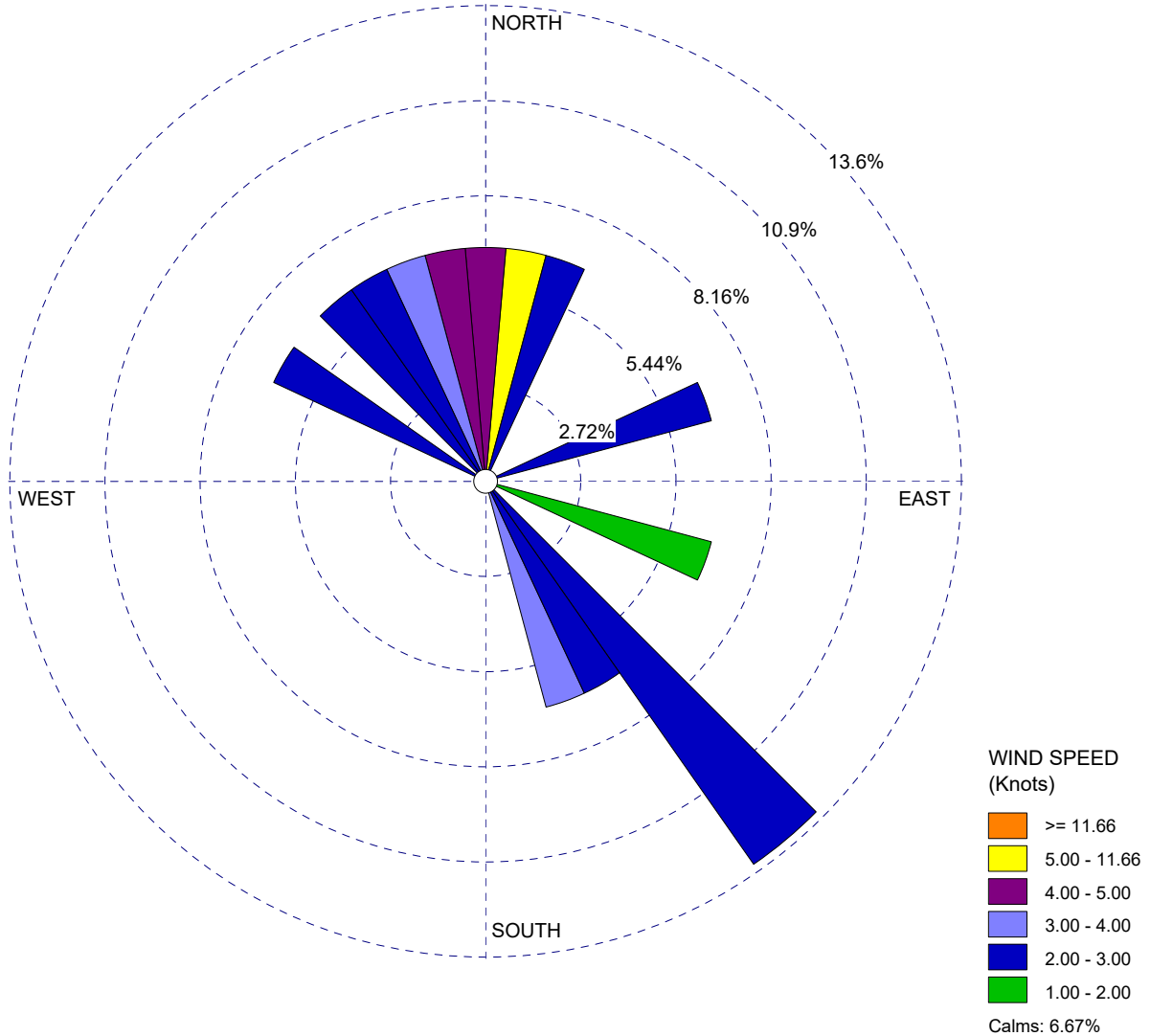
Attachment B

Meteorological Conditions

WIND ROSE PLOT:

Station #Lynchburg Ferry

DISPLAY:

Wind Speed
Direction (blowing from)

COMMENTS:

DATA PERIOD:

Start Date: 3/17/2019 - 16:00
End Date: 3/18/2019 - 06:00

COMPANY NAME:

MODELER:

CALM WINDS:

6.67%

TOTAL COUNT:

15 hrs.

AVG. WIND SPEED:

2.40 Knots

DATE:

3/18/2019

PROJECT NO.:

111356